



INTERNATIONAL SCHOOL
OF NANSHAN SHENZHEN

ISNS 深圳市南山外籍人员子女学校



K4

Curriculum Guide



ISNS Vision

ISNS will be an inspirational force for young people to reach their full potential as successful, empowered citizens of the world.

ISNS Mission Statement

ISNS develops globally responsible and compassionate young people by encouraging them to become active and inquiring life-long learners within an intercultural community.

ISNS Core Beliefs

We believe:

- In the worth of every student
- In striving for excellence
- In the value of different perspectives
- In taking care of our world
- In promoting international mindedness





CARING LOCALLY.

THRIVING GLOBALLY.

What does teaching and learning look like at ISNS?

- Learning is driven by inquiry which sparks student engagement and curiosity.
- Learning takes place collaboratively. Students exercise leadership, take on a variety of roles within groups, resolve conflict and listen actively to other perspectives.
- Learning is a process that is focused on the building of skills that will enable students to be successful in all situations and circumstances (Thinking Skills, Social Skills, Communication Skills, Research Skills, Self-Management Skills).
- Students are given the agency to guide their own learning.
- Learning is differentiated to meet individual needs.
- Learning is focused on conceptual understandings.
- Learning is designed to develop the whole child through the IB Learner Profile attributes.
- Learning is aimed at creating caring global citizens who contribute to the world around them.



K4 Procedures

Communication with ISNS

Communication between home and school is an essential part of any quality educational programme. Please send a message to your child's teacher through email or Seesaw with any questions, suggestion or concerns. You can write your message in any language. Your proactive communication helps the ISNS team best support you and your child.

Please reach out to our ISNS team at any time. Our ISNS teachers will also get in touch with you if we have any questions or concerns about your child's progress or wellbeing.

Seesaw

Seesaw has four key functions at ISNS:

- Seesaw gives you a window into your child's day at school and allows you to regularly see their most recent school experiences
- Seesaw is a convenient messaging system for teachers and families to connect
- Seesaw is where teachers will share important announcements about the class
- Seesaw is the primary tool for reporting in the Early Years Programme at ISNS

Please be sure to check Seesaw regularly for announcements and teacher messages. Please leave encouraging and positive comments on your child's posts and ask them questions about their learning.

ManageBac

In EY portion of the PYP, ManageBac is used to share the End of Year Progress report with families. It is also used as our attendance tracker and school wide announcement platform. You can send attendance notes through ManageBac. You can also see more information about your child's current unit of inquiry.

Home Learning

Students in K4 do not benefit nor need home learning. When your child returns home from school, they would benefit more from playing with friends and family. We recommend having quality family time through things such as reading, creating art or getting outside to explore the world around them.

Uniforms

Uniforms help create a sense community as a school. Our uniforms help build a shared identity among students, promote unity over competition and build sense of pride. It also makes things a little easier when getting ready for school each morning.

In K4 students are encouraged to wear the PE uniform elements. Students should wear shoes that they can comfortably run and play in. Please ensure that they have comfortable ISNS clothing to wear in the classroom, including sweaters. ISNS students are welcome to wear any hat, sweater or coat while out at recess.

Students are required to wear the PE uniform on days they have PE class

Please send an extra uniform to school with your child. All uniform items should be labelled with your child's name.

Student Devices

Students' use of iPads is limited in K4. We focus on developing skills through actively engaging in the world around them with their classmates. Any use of electronic devices will be to enhance their educational experience.

Reporting

Reporting in K4 focuses on the development of the key skills that underpin the Early Years Programme at ISNS. The ISNS approach to reporting promotes active involvement of parents through dialogue with their child's teacher. Four times throughout the year, Parent-Teacher conferences will be arranged with your child's teacher. The official reporting periods are:

- Parent Teacher Conferences – November
- Skills Progress Written Report – February
- Student-Led Conferences – April
- Parent Teacher Conferences – June

Please get in touch with your child's teacher at any point in the year if you have questions or concerns about your child's progress. Our ISNS team is always happy to hear from you.

Positive Approaches to Behaviour

In the ISNS Primary Years Programme, we believe in supporting the development of the whole child. This includes supporting the development of a respectful, principled and caring character, as well as developing social skills, self-management skills and communication skills in every child.

We believe that mistakes present an opportunity for authentic learning. When students make mistakes, our teachers and Principal team seek to work with the child to:

- Reflect on what led to their choice
- Reflect on how their choice has affected themselves, others, and our community
- Make a plan to restore relationships and repair harm
- Discuss what could be done differently next time

Our PYP team values our partnership with our ISNS families. We ask for your help to use positive behaviour approaches at home by encouraging positive actions by your child, and by pausing to reflect on harmful actions.

These are key tools that we use at school, and we encourage ISNS families to use them at home, as well:



1. Problem-Solving Puzzle:

Children can use this tool to find alternatives to harmful expressions of sadness, anger or frustration.



2. I Message:

Children can use this message to express their feelings. They can listen to other people involved in a conflict share their feelings, as well. This tool builds empathy and understanding of perspective.



3. Phoenix Apology:

This four-step apology helps students express empathy for others, and an understanding of which community expectation they need to improve upon.

How Families Can Support Growth

At ISNS, we recognize that students excel when home and school act in partnership. Here are important ways that you can support your child's success at school.

Ensure that your child is ready to learn each day:

- Be sure that your child has enough sleep each night
 - ▶ Children between the ages of 3-5 need 10-13 hours of sleep daily
- Create a joy of reading by reading to and with your child daily

Give your child opportunities to develop self-management skills and independence:

- Create opportunities for your child to build independence
 - ▶ Help your child practice getting dressed and putting on their shoes on their own
 - ▶ Help your child practice washing their hands and eating on their own

Communicate with your child:

- Give positive feedback when you see your child showing effort, making progress or demonstrating one of the Learner Profile attributes
- Ask your child specific questions about their learning and experiences that day
- Remain positive and focus on your child's emotions when speaking about their day at school
- Be patient with your child if they are reluctant to share about their day

Communicate with ISNS:

- Check Seesaw every day for school announcements or messages from your child's teacher
- Check for any learning engagements posted on Seesaw that day and leave a positive comment. Use images posted on Seesaw to discuss with your child what they are doing
- Attend parent workshops at ISNS

- Message your child's teachers if you have any questions or concern
- Take any opportunity to participate in your child's educational experience at ISNS

Questions You Can Ask Your Child

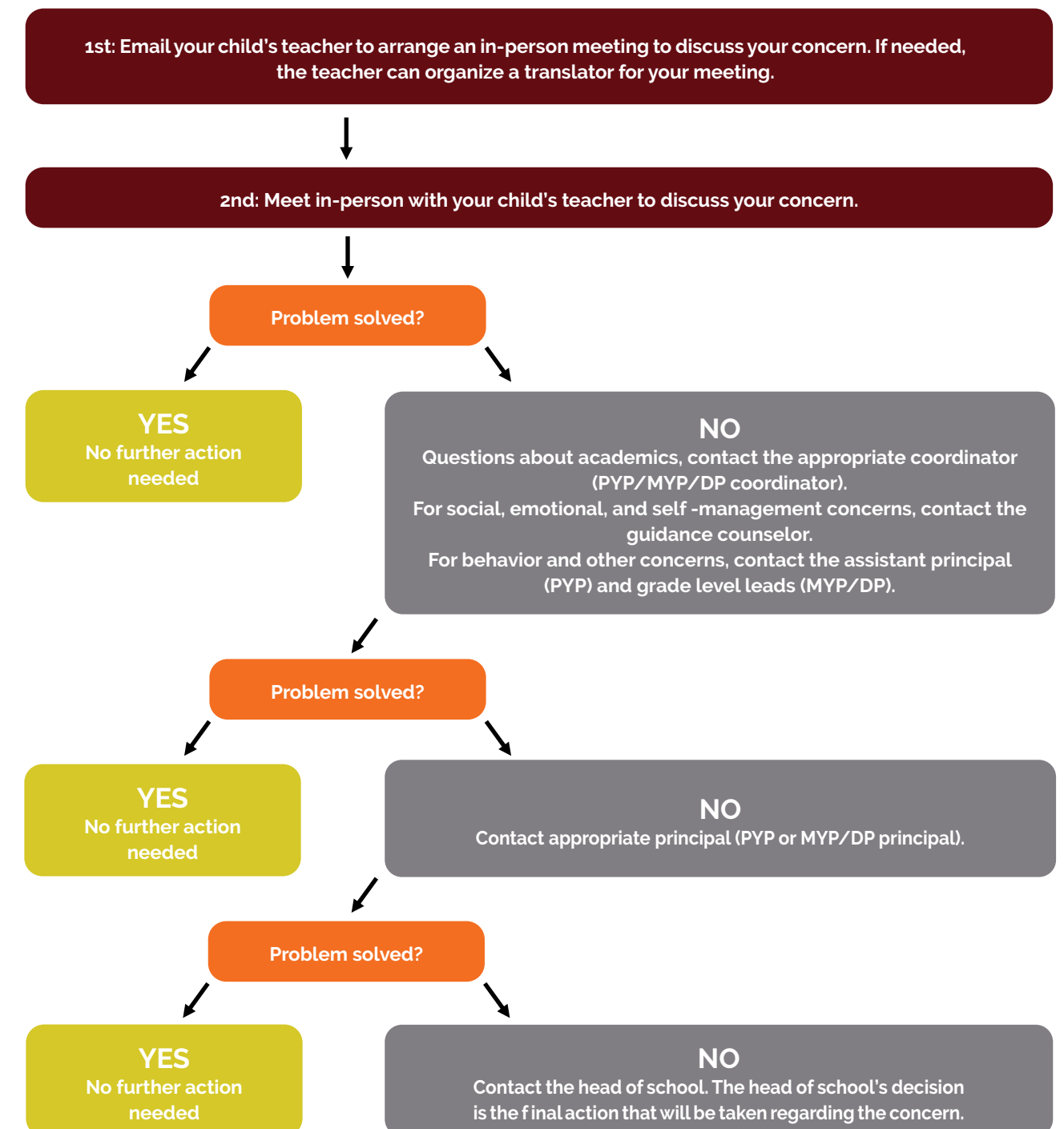
- How were you caring today? How was someone caring to you today?
- How did you use your communication skills today?
- Did you hear a story today? What was it about?

IB Programme implementation Concerns and Appeals

- Questions and concerns regarding implementation of the PYP, MYP and DP should be directed toward the appropriate IB Coordinator.
- The IB Coordinator will work with Senior leadership to investigate the concern and ensure that the school is following the Rules for IB World Schools and the specific implementation rules for the programme in question. If it is found that the school is not in compliance, change will be implemented.
- Parents have access to the Rules for IB World Schools and rules for each programme on the ISNS Website.
- The IB Coordinator and appropriate principal will meet with all parties to ensure the rules are communicated and where, necessary communicate the change initiative and timeline.
- PYP and MYP Grade appeals for subjects can be directed to the appropriate subject teacher. MYP Projects, eAssessment and DP Exam or Core grade appeals should be submitted directly to the IBO.

Flowchart for Addressing Concerns Regarding Your Child*

Concerns related to IB programme implementation, curriculum, your child's academic progress, home learning, behavior incidents, or other individual issues regarding your child.

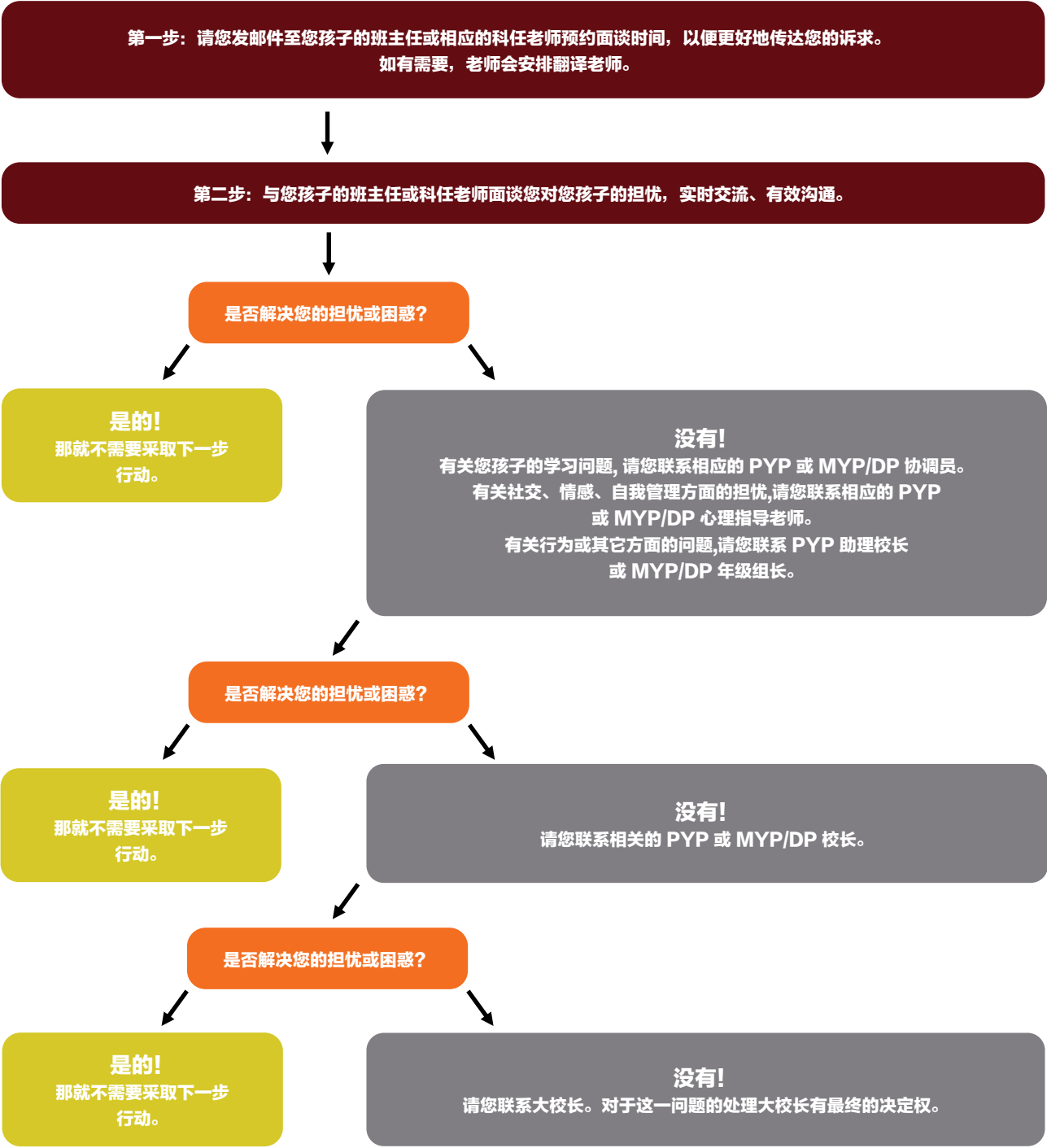


If you have any questions or concerns regarding the implementation of this flowchart, please contact the head of school.

* For addressing schoolwide concerns, you may contact our Parent Association representatives. Examples of schoolwide concerns: Lunch concerns, safety concerns, school schedule suggestions.

沟通指南*

如果您对您孩子在学校的学习情况、课后学习、在校行为表现或其他方面有任何的担忧或疑惑，欢迎您参照下方流程图及时与学校相关人员进行沟通：



如果您对此流程图的执行有任何疑惑或意见，请您直接联系学校大校长。

* 若您对学校层面的运作有任何的意见或建议，如：学校午餐问题、学生在校的安全问题、对校历的建议等，欢迎您及时联系家长委员会的代表。

The Primary Years Programme

Designed for students age 3-12, the IB Primary Years Programme (PYP) provides the knowledge, concepts, skills, personal attributes and the capacity to take action, all of which younger students need to equip them for successful lives, both now and in the future.

Learning through inquiry, a child's investigations across and beyond subject areas will strengthen knowledge and understanding as they explore global, topical and relevant 'big picture' questions, or transdisciplinary themes.

Student-centered learning

The PYP provides an ideal foundation for children to become successful, lifelong learners by developing their:

- social and emotional well-being
- independence, as they take responsibility for their own learning
- international mindedness
- understanding of the world and their ability to function effectively within it
- attitudes and dispositions for learning
- ability to take mindful, appropriate and sustainable student-initiated action
- language skills; all students study an additional language from at least 7 years of age.

Inquiry-based learning Involves:

- Exploring, wondering and questioning
- Experimenting and playing with possibilities
- Making connections between previous and current learning
- Making predictions
- Deepening understanding through the application of a concept
- Researching and collecting information
- Solving problems in a variety of ways

Learning in the PYP is underpinned by **six transdisciplinary themes**, each selected for their relevance to the real world. Young learners explore the commonalities of human experience by investigating these themes through a programme of inquiry.

Who we are

Inquiry into the nature of the self; beliefs and values; person, physical, mental, social and spiritual health; and human relationships.

Where we are in place and time

Inquiry into our orientation in place and time; personal histories; the discoveries and explorations of humankind; and the interconnectedness of individuals and civilizations.

How we express ourselves

Inquiry into the ways in which we discover and express ideas, feelings, nature, culture, beliefs and values.

How the world works

Inquiry into the natural world and its laws, the interaction between the natural world and human societies; the impact of scientific and technological advances on society and on the environment.

How we organize ourselves

Inquiry into the interconnectedness of human-made systems and communities; the structure and function of organizations; and their impact on humankind and the environment.

Sharing the planet

Inquiry into rights and responsibilities in the struggle to share finite resources with other people and other living things; access to equal opportunities; and peace and conflict resolution.

Play Based Learning in The Early Years



Play is an integral part of children’s lives and is a hallmark of children’s healthy development. The IB PYP program recognizes that play and inquiry go hand in hand. Research supports the effectiveness of the IB’s PYP in an early year setting. Play arises as a focus for development of language, social, cognitive and physical skill. Through interactions with other peer’s children develop social confidence and learn to regulate their behavior with a sense of independence. Language is acquired through pretend play where children use language to maintain the play episode, plan a story line and assign roles. Such pretend play allows children to generate multiple ways of expressing their thinking.

Cognitive development occurs when children learn to solve problems. For example, playing with puzzles enhance children’s memory skills as well as their attention span and engage in higher order thinking. Physical skills develop when children play out-door in jungle gyms, swings and slides. As children learn

to reach, grasp, crawl, run, climb and balance, they develop gross-motor skills and playing with small toys develop fine motor skills (Children learn through play, 2011).

IB Learner Profile & ATL Skills



The **International Baccalaureate (IB) learner profile** describes a broad range of human capacities and responsibilities that go beyond academic success. They imply a commitment to help all members of the school community learn to respect themselves, others and the world around them. There is 1 learner Profile with 10 different attributes

Self-Management Skills: The ability to set goals, manage tasks, manage your state of mind, self-motivation, resilience, and mindfulness.

Approaches to Learning in the PYP:

Approaches to learning (ATL) are skills designed to enable students in the **IB** Primary Years Programme (PYP) to “learn how to learn.” They are intended to apply across curriculum requirements and provide a common language for teachers and students to use when reflecting and building on the process of learning.

They are categorized into Five Skill Domains:

- Thinking Skills:** The ability to creatively and critically analyse, apply, evaluate, synthesize, conceptualize, contextualize, reason and solve problems.
- Communication skills:** The ability to produce and interpret messages effectively.
- Social Skills:** The ability to participate and collaborate with others whilst showing awareness and respect for other cultures, varying points of view, and individual differences.
- Research Skills:** The ability to determine the extent of information needed, locate and access information, organize and evaluate information, and use and share information effectively, efficiently, and ethically.

K4 Unit of Inquiry

Who We Are	How We Express Ourselves	How The World works	Sharing The Planet
<p>Unit Title: Our Senses</p> <p>Central Idea: People can learn about themselves and their surroundings by using their senses</p> <p>Lines of inquiry: An inquiry into</p> <ol style="list-style-type: none">1. Our senses2. How we use our senses to explore3. The importance of our five senses <p>Key Concepts: Form Function Change</p> <p>Related Concepts: Organs Well-Being Safety Adaptation</p> <p>ATL's: Thinking Skills</p> <p>Learner Profile Attributes: Communicator Reflective Balanced</p> <p>Subject Integration: Music Library Art (Visual Arts) Math Literacy (Year-Round Integration) Mandarin (Full Integration)</p> <p>Action Focus: Participation</p>	<p>Unit Title: Play</p> <p>Central Idea: Ideas and feelings can be expressed through play</p> <p>Lines of inquiry: An inquiry into</p> <ol style="list-style-type: none">1. Communication through play2. Imagination in Play3. Using different forms of play to express ourselves <p>Key Concepts: Responsibility Perspective Connection</p> <p>Related Concepts: Skill Interaction Creativity Discovery</p> <p>ATL's: Self-Management Skills Social Skills</p> <p>Learner Profile Attributes: Open-Minded Inquirer Risk-Taker</p> <p>Subject Integration: PE (Full Integration) Music Library Art (Dance, Drama, Visual Arts) Math Literacy (Year-Round Integration) Mandarin (Partial Integration)</p> <p>Action Focus: Participation</p>	<p>Unit Title: Light</p> <p>Central Idea: Living and non-living things interact with light</p> <p>Lines of inquiry: An inquiry into</p> <ol style="list-style-type: none">1. Different sources of light2. How does light change3. Importance of light <p>Key Concepts: Form Causation Connection</p> <p>Related Concepts: Properties Transformation Conservation Heat</p> <p>ATL's: Research Skills Thinking Skills</p> <p>Learner Profile Attributes: Risk-takers Knowledgeable</p> <p>Subject Integration: Library Literacy (Year-Round Integration) Mandarin (Full Integration)</p> <p>Action Focus: Participation</p>	<p>Unit Title: Plants</p> <p>Central Idea: Plants are important for the planet and for our lives</p> <p>Lines of inquiry: An inquiry into</p> <ol style="list-style-type: none">1. Caring for plants2. How plants contribute to life on Earth3. Products obtained from plants <p>Key Concepts: Responsibility Connection Function</p> <p>Related Concepts: Living and Non-Living Things Habitat Growth Life Cycles</p> <p>ATL's: Research Skills</p> <p>Learner Profile Attributes: Caring Principled Knowledgeable</p> <p>Subject Integration: Library Math Literacy (Year-Round Integration) Mandarin (Partial Integration)</p> <p>Action Focus: Participation Lifestyle Choices</p>

Our Primary Years Curriculum at ISNS



ISNS is proud to be accredited by both the Canadian province of New Brunswick and the International Baccalaureate Organization. We combine learning outcomes from both the New Brunswick Curriculum and the PYP Scope and Sequence. This combination maximizes our ability to provide students with a strong skill foundation and a conceptual approach to building knowledge.

Our programme of inquiry is designed so that learning outcomes for each subject are explored through either an integrated or standalone approach.

- Integrated outcomes are explored during the homeroom Units of Inquiry and learning is connected to other subjects through the lens of the Transdisciplinary Theme, Central Idea, Lines of Inquiry, and Key & Related Concepts
- Standalone outcomes are approached through unit exploration that is targeted to each specific subject

Using these learning outcomes provided by New Brunswick and the PYP, teachers collaborate to create learning engagements that support student inquiry, skill development, and conceptual understanding. Our PYP Coordinators work closely with teachers to ensure outcomes are effectively addressed and assessed.

English in K4



Our Approach to Teaching & Learning English at ISNS

- English, for many ISNS students, is not their home or native language.
- EAL (English as an Additional Language) support is provided to students in classrooms across the Early Years through the Primary Years Programme.
- Single-subject teachers differentiate their lessons to meet the English language needs of their students.

Where are the outcomes for the ISNS English curriculum derived from?

- The English Language outcomes are derived from the IB PYP Language Scope and Sequence and New Brunswick (Canada) Provincial Achievement Standards.
- Scope and sequence refer to the content that will be taught in each grade level.
- These scope and sequence outcomes enable teachers to create learning experiences that will support and extend learning at various stages of their language development.

How are the outcomes categorized?

The English outcomes are categorized into 4 key domains of Literacy development:

- Speaking and Listening
- Reading

- Writing
- Viewing and Presenting

English in the Early Years K3 and K4

- In the Early Years (EY), English is taught in a play-based approach; while teachers might use some time at centers with students to focus on letters and sounds, prolonged, explicit instruction in reading and writing is not developmentally appropriate.
- Students might experiment with writing through play and learn some basic foundational skills (directionality of sentences, how to hold and care for books, recognizing and writing their name or letters); however, there is no expectation that students master the English alphabet before entering K5.
- English in EY can integrate with units of inquiry thereby teaching the central idea, lines of inquiry, Key and Related concepts.
- For K3 and K4 students, the outcomes are primarily focused on Speaking and Listening and Viewing and Presenting; this is developmentally appropriate for students in these grades.
- Some specific, developmentally appropriate English language outcomes and skills that students should master by the end of the grade include:
 - Begin to play and experiment with letters and sounds
 - Talk with teachers and classmates using more than one-word responses
 - Create drawings and scribble on paper
 - Share ideas about their illustrations orally
 - Listen to stories shared aloud
 - Understand basic English directions
 - Express basic feeling words

Mathematics in K4



At ISNS, we combine outcomes from the New Brunswick Math Curriculum as well as the PYP Math Scope & Sequence. Teachers work closely with the PYP coordinators to ensure outcomes are addressed effectively. Outcomes are incorporated within units of inquiry as well as taught outside of the units promoting greater transfer and practice of various math concepts.

In K4, students will learn the following strand in Mathematics namely Number Sense, Patterns and Relations, Measurement, Shape and Space and Data Handling.

Goals for mathematically literate students

The main goals of mathematics education are to prepare students to:

- use mathematics confidently to solve problems
- communicate and reason mathematically
- appreciate and value mathematics
- make connections between mathematics and its applications
- commit themselves to lifelong learning
- become mathematically literate adults, using mathematics to contribute to society.

Students who have met these goals will:

- gain understanding and appreciation of the contributions of mathematics as a science, philosophy and art
- exhibit a positive attitude toward mathematics

- engage and persevere in mathematical tasks and projects
- contribute to mathematical discussions
- take risks in performing mathematical tasks
- exhibit curiosity

Mathematics is taught and learned in the following three stages:

- Constructing
- Transferring
- Applying

Students will learn active strategies to employ in real world applications. They will construct their understanding using math manipulatives and hands-on learning and actively problem solve using various strategies.

The outcomes cover the following sub-topics within each strand:

Number Sense are:

- Understand one- to-one correspondence
- Understand conservation of a number
- Say the number sequence by 1s starting anywhere from 1 to 10 and from 10 to 1
- Connect and use number names and numerals to the quantities they represent
- Recognize groups of 1-5 objects without counting
- Recognize and name familiar arrangements of 1 to 5 objects or dots
- Compare quantities, 1 to 10, using one-to-one correspondence.

Patterns and relations:

- Understand that patterns can be found in everyday situations, for example, sounds, actions, objects, nature
- Demonstrate an understanding of repeating patterns (two or three elements) by: identifying;



reproducing; extending; creating patterns using manipulatives, sounds and actions

- Extend and create patterns

Shape and Space:

- Sort 2-D objects using a single attribute
- Identify, sort, describe and compare 2-D shapes

Measurement:

- Identify, compare and describe attributes of real objects, for example, longer, shorter, heavier, empty, full, hotter, cold
- Describe observations about events and objects in real-life situations

Data Handling:

- Understand that sets can be organized by different attributes
- Sort objects by attributes

Science in K4



In the PYP, science is viewed as the exploration of the biological, chemical and physical aspects of the natural world, and the relationships between them. The inclusion of science within the PYP leads learners to an appreciation and awareness of the world as it is viewed from a scientific perspective. It encourages curiosity and ingenuity and enables the student to develop an understanding of the world. Reflection on scientific knowledge also helps students to develop a sense of responsibility regarding the impact of their actions on themselves, others and their world.

Inquiry is central to scientific investigation and understanding. Students actively construct and challenge their understanding of the world around them by combining scientific knowledge with reasoning and thinking skills. Scientific knowledge is made relevant through its innumerable applications in the real world. The science process, by encouraging hands-on experience and inquiry, enables the individual to make informed and responsible decisions, not only in science but also in other areas of life.

Science is taught through the following Four Strands:

- Living Things
- Earth and Space
- Materials and Matter
- Forces and Energy

The Overall Expectations for Science for students in Grade K4 are:

- Students will develop their observational skills by using their senses to gather and record information.
- Students will use their observations to identify simple patterns, make predictions and discuss their ideas.
- They will explore the way objects and phenomena function.
- Recognize basic cause and effect relationships.
- Students will examine change over varying time periods and know that different variables and conditions may affect change.
- Students will be aware of different perspectives, and they will show care and respect for themselves, other living things and the environment.
- Students will communicate their ideas or provide explanations using their own scientific experience and vocabulary.

The science focused units of inquiry in K4 are the following:

- ★ Our Senses
- ★ Light
- ★ Plants

Social Studies in K4



In the PYP, social studies is viewed as the study of people in relation to their past, their present and their future, their environment and their society. Social studies encourages curiosity and develops an understanding of a rapidly changing world. Through social studies, students develop an understanding of their personal and cultural identities. They develop the skills and knowledge needed to participate actively in their classroom, their school, their community and the world: to understand themselves in relation to their communities.

The aim of social studies within the PYP is to promote intercultural understanding and respect for individuals and their values and traditions. In support of the IB mission statement, the social studies component of the PYP curriculum will encourage students to "understand that other people, with their differences, can also be right". Therefore, there is a strong emphasis on the reduction of prejudice and discrimination within the classroom, the school, the community and the world.

Social Studies is Taught through the Following Five Strands:

- Human systems and economic activities
- Social organization and culture
- Continuity and change through time
- Human and natural environments
- Resources and the environment

The Overall Expectations for Social Studies for students in K4 are:

- Students will explore their understanding of people and their lives, focusing on themselves, their friends and families, and their immediate environment.
- They will practise applying rules and routines to work and play.
- They will gain an increasing awareness of themselves in relation to the various groups to which they belong and be conscious of systems by which they organize themselves.
- They will develop their sense of place, and the reasons why particular places are important to people.
- They will also develop their sense of time, and recognize important events in their own lives, and how time and change affect people.

The social studies focused units of inquiry in K4 are the following:

- ★ Play

Music and Visual Arts in K4



Arts are integral to the PYP as they are a powerful mode of communication through which students explore and construct a sense of self and develop an understanding of the world around them. Arts provide students with a wide range of opportunities and means to respond to their experiences and engage with historical, social and cultural perspectives. The students are stimulated to think and to articulate their thoughts in new ways, and through a variety of media and technologies. Learning about and through arts is fundamental to the development of the whole child, promoting creativity, critical thinking, problem-solving skills and social interactions.

Music and Visual arts are taught through the following Two Strands:

Creating:

The process of creating provides students with opportunities to communicate distinctive forms of meaning, develop their technical skills, take creative risks, solve problems and visualize consequences. Students are encouraged to draw on their imagination, experiences and knowledge of materials and processes as starting points for creative exploration. They can make connections between their work and that of other artists to inform their thinking and to provide inspiration. Both independently and collaboratively, students participate in creative processes through which they can communicate ideas and express feelings. The creating strand provides opportunities for students to explore their personal interests, beliefs and values and to engage in a personal artistic journey.

Responding:

The process of responding provides students with opportunities to respond to their own and other artists' works and processes, and in so doing develop the skills of critical analysis, interpretation, evaluation, reflection and communication. Students will demonstrate knowledge and understanding of the concepts, methods and elements of dance, drama, music and visual arts, including using specialized language. Students consider their own and other artists' works in context and from different perspectives in order to construct meaning and inform their own future works and processes.

The responding strand is not simply about reflecting; responding may include creative acts and encompasses presenting, sharing and communicating one's own understanding. By responding to their own artwork and that of others, students become more mindful of their own artistic development and the role that arts play in the world around them.

Early Years:

- In the Early Years (K3, K4 and K5), Visual Arts and Music outcomes are integrated with all units authentically wherever possible.
- Music outcomes includes dance and drama outcomes.
- Learning experiences include music, movement and arts to instill creativity and develop a love for the arts.

Physical Education in K4



In the PYP, personal, social and physical education (PSPE) is concerned with the individual's well-being through the promotion and development of concepts, knowledge, attitudes and skills that contribute to this well-being. It encompasses physical, emotional, cognitive, spiritual and social health and development.

Physical Education is taught through the following Three Strands:

Identity:

An understanding of our own beliefs, values, attitudes, experiences and feelings and how they shape us; the impact of cultural influences; the recognition of strengths, limitations and challenges as well as the ability to cope successfully with situations of change and adversity; how the learner's concept of self and feelings of self-worth affect his or her approach to learning and how he or she interacts with others.

Active Living:

An understanding of the factors that contribute to developing and maintaining a balanced, healthy lifestyle; the importance of regular physical activity; the body's response to exercise; the importance of developing basic motor skills; understanding and developing the body's potential for movement and expression; the importance of nutrition; understanding the causes and possible prevention of ill health; the promotion of safety; rights and the responsibilities we have to ourselves and others to promote well-being; making informed choices and evaluating consequences, and taking action for healthy living now and in the future.

Interaction:

An understanding of how an individual interacts with other people, other living things and the wider world; behaviors, rights and responsibilities of individuals in their relationships with others, communities, society and the world around them; the awareness and understanding of similarities and differences; an appreciation of the environment and an understanding of, and commitment to, humankind's responsibility as custodians of the Earth for future generations.

A balanced PSPE curriculum includes the following types of experiences.

- Individual pursuits
- Movement composition
- Games
- Adventure challenges
- Health-related fitness

In K4, these are the units of inquiry where PSPE outcomes are **integrated**:

- ★ Play

In K4, these are the PSPE **standalone** units of inquiry:

- ★ I Can Do It!
- ★ Let's Move!
- ★ Teamwork

Mandarin Language & Literature and Language Acquisition



Our Approach to Teaching & Learning Mandarin at ISNS

- Mandarin is taught as an additional language
- We teach Mandarin characters and grammar rules to enhance speaking, writing, reading and presenting skills in Mandarin
- We use Mandarin to support literacy development
- We use Mandarin to help students understand concepts and content taught in the classroom

Where are the outcomes for the ISNS Mandarin curriculum derived from?

- Mandarin uses the outcomes from the Chinese National Curriculum that has been aligned with the IB PYP Language Scope and Sequence and New Brunswick language outcomes
- Scope and sequence is a document that refers to the content that will be taught in each grade level in a sequential order.
- These scope and sequence outcomes enable teachers to create learning experiences that will support and extend student's learning at various developmental phases.

How are the outcomes categorized?

The Mandarin outcomes are categorized into 4 key domains of Literacy development

- Speaking and Listening

- Reading
- Writing
- Viewing and Presenting

Mandarin in the Early Years K3, K4 and K5

- In the Early Years, Mandarin is used to aid students understanding of key vocabulary and content taught in the homeroom.
- Due to this, Mandarin in EY will integrate with units of inquiry thereby teaching the central idea, lines of inquiry, Key and Related concepts
- For K5 students, they will additionally learn to recognize and identify 35 Mandarin characters
- In order to keep it developmentally appropriate, for the early years the outcomes are focused on Speaking and Listening and Viewing and Presenting.

Student Support at ISNS (including EAL)



Our Approach to Student Support at ISNS

- Student Support focuses on meeting the academic, English language, social/emotional, and behavioral needs of students while considering what is in the best interest of the child.
- The team takes a holistic approach to interventions. For example, the emotional needs of a student might need the support of a counselor and an EAL teacher - if a student struggles to learn English, this could have an impact on their self-esteem. Both the EAL teacher and counselor would want to work together with the student and parents to provide a student with the necessary academic and emotional support needed for success.
- The Student Support team includes members of the Counseling team, EAL teachers, and Inclusion teachers. In addition, the PYP Math and Literacy Coordinators can provide support to teachers and students as needed.

Student Support in the Early Years (K3 – K5)

- In the Early Years, Student Support primarily focuses on the social/emotional and behavioral needs of students. Counselors provide lessons to whole classrooms, but they also might work with students in small groups or individually (as needed).
- The social/emotional and behavioral support for students is provided by the homeroom teacher, single-subject teachers, teaching assistants, the counselor, and the principal working in partnership with parents and students (when appropriate).
- Inclusion teachers might provide consultative

services but will only provide limited academic support to students; at this age, children reach developmental milestones at different times than their peers. Academic learning occurs after the social/emotional and behavioral needs of a child are addressed. The best interests of the child are the primary consideration for the types of interventions offered by ISNS staff.

- If a psycho-educational assessment by an external expert is requested in the Early Years, the primary focus on the assessment will generally be social/emotional or behavioral needs.



ISNS

**INTERNATIONAL SCHOOL
OF NANSHAN SHENZHEN**

深圳市南山外籍人员子女学校

admissions@isnsz.com
86 755 2666 1000
www.isnsz.com

11 Longyuan Road, TaoYuan
Sub-District, Nanshan District,
Shenzhen, P.R. China 518055